



INSTRUCTION MANUAL
RIBBON AND FILAMENT TRANSDUCERS
MODEL RFA



217 Pickering Road

Rochester, NH 03867-4630 U.S.A.

For assistance, please call:

TECHNICAL SERVICE - Installations, Start-Up, Troubleshooting, Repairs, Field Service, Returns. **techsupport@dfc.com**

CUSTOMER SERVICE - Replacement Parts, Individual Products, Questions about Orders, Manuals. **customerservice@dfc.com**

SALES - Product Information, Systems Application Questions, and placing orders for standard products and special systems. **sales@dfc.com**

Telephone: (603) 332-6150 Fax: (603) 332-3758

E-mail: info@dfc.com Internet: www.dfc.com

TABLE OF CONTENTS

SECTION ONE	DESCRIPTION	PAGE
1.1	General Description	1
1.2	Construction and Mechanical Operation	1
1.3	Specifications	2
1.4	Standard Features	2
1.5	Configuration Choices	2
1.6	Options	2
SECTION TWO	INSTALLATION	
2.1	Dimensions	3
2.2	Pre-Installation Requirements	4
2.3	Installation Instructions	5
SECTION THREE	CALIBRATION AND SET-UP	
3.1	Introduction	6
3.2	Zero the Tension Meter	6
3.3	Calibrate the Tension Meter	6
SECTION FOUR	CARE AND MAINTENANCE	
4.1	Bearing Life	7
4.2	Disassembly and Reassembly	9
4.3	Electrical Connector Replacement	9
4.4	Changing the Bearings and/or Wheel	9
SECTION FIVE	TROUBLESHOOTING	10
SECTION SIX	REPLACEMENT PARTS	12
APPENDICES:	A. Transducer Electrical Connections	13
	B. Selection of Load Rating	14
	C. Typical Tensions	16
	Terms and Conditions	17
	Declarations of Conformity	18
	Index	19

LIST OF ILLUSTRATIONS

FIGURE:	1. RFA Cut-way View	1
	2. Dimensions	3
	3. Tension Zones	4
	4. Model RFA Mounting Styles	4
	5. Tension Force Direction	5
	6. Web Path	6
	7. Bearing Life Nomogram	8
	8. Model RFA Transducer Wiring	13

1.1 GENERAL DESCRIPTION

The Model RFA Ribbon and Filament Tension Transducer is an electro-mechanical device that converts filament tension into a D.C. voltage which is proportional to tension. The voltage is amplified in external electronic circuitry and displayed on an analog or digital meter which is calibrated to indicate actual filament tension, expressed in pounds, ounces, grams, kilograms, newtons or any other desirable units. It can also be supplied to a regulator circuit to control tension automatically.

The RFA Tension Transducer is typically used in tension control and display systems in filament winding, unwinding, and intermediate applications where the machine has only one side frame and the idler wheels are cantilevered. The information in this Section will help give a clear understanding of the RFA Tension Transducer, how it works, and how it is used.

1.2 CONSTRUCTION AND MECHANICAL OPERATION (see Figure 1)

The standard RFA Transducer wheels are manufactured of aluminum to be lightweight and of low inertia, and the ribbon wheels and filament wheels are given a hard coat anodized surface finish to be durable. The bearings are standard deep-groove ball type with shields to discourage entry of contaminants. Custom wheel geometries and/or finishes are available including those made by the customer to be mounted on the adapter wheel, subject to specific DFE engineering approval.

Inside the transducer is a single beam having two parallel cantilevered webs with strain gages mounted on each. When tension is applied, the beam deflects a small amount, causing an electrical output from the strain gages which is directly proportional to the filament tension.

The bore of the housing acts as a mechanical stop, preventing damage to the beam and gages from accidental overloads. The stop is functional through 360 degrees, so the overload condition may occur from any direction, not just the load direction. In all cases, the beam is prevented from deflecting far enough to cause any damage.

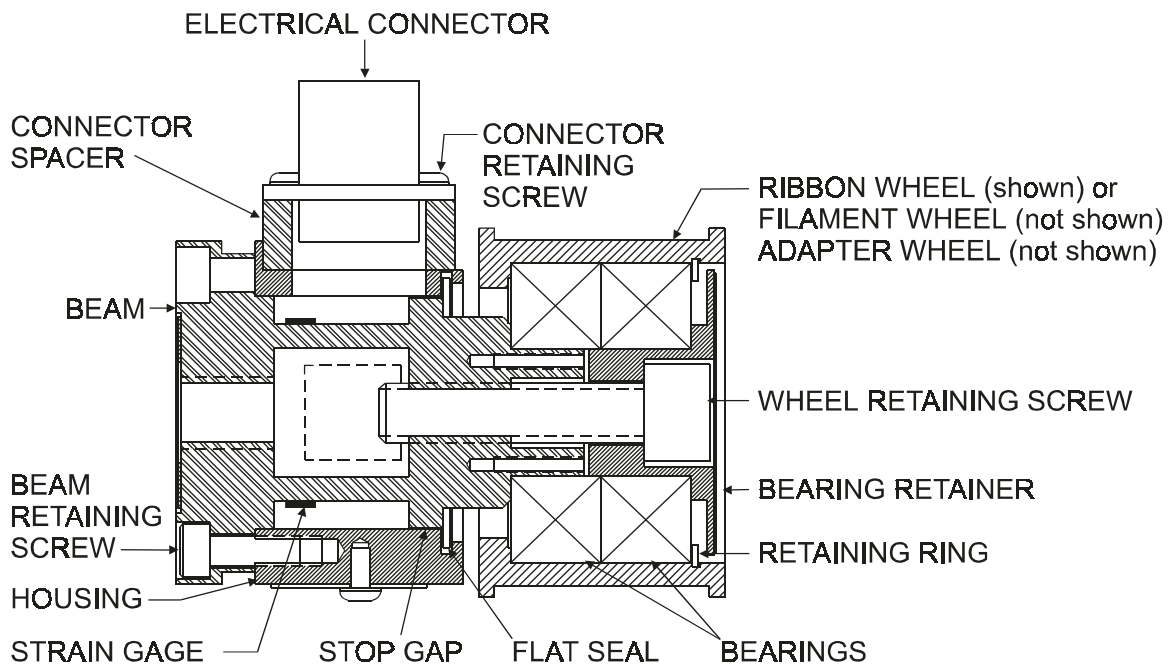


Figure 1 - CUT-AWAY VIEW OF RFA TRANSDUCER

1.3 SPECIFICATIONS

Excitation Voltage:	5 Vdc (10 Vdc w/XR Option)
Output:	500 mVdc, nominal, at rated load (1000 mVdc w/XR Option)
Strain Gages:	semiconductor, 100 ohms nominal resistance
Non-Repeatability:	± 1/4 % full span (FS)
Non-Linearity and Hysteresis Combined	± 1/2 % FS
Temperature Range	-10° F to +200° F (-23° C to +93° C)
Temperature Coefficient	0.02% per degree F, typical (0.01% per degree C, typical)
Material:	Transducer = Stainless Steel & Aluminum Wheel (except adapter) = Aluminum, Hard coat anodized
Maximum Overload Capacity	1200 lbs. (5338 N)
Deflection:	0.005" typical (0,127 mm typical)
Electrical Connector:	ITT Cannon KPT02F10-6P
Mating Electrical Connector	ITT Cannon KPT06F10-6S
Standard Connector Position	S and FL styles - 6 o'clock with reference to force direction
Electrical Connections	pin A = negative output (WHT) pin B = 5V+ (BLK) pin C = 5V- (RED) pin D = positive output (GRN) pin E = 5V- (BLU) pin F = 5V+ (BRN)
Load Ratings:	10, 25, 50, 100, 150 lbs (45, 111, 222, 445, 667 N)
Break-Away Torque:	0.25 in-oz (18 gram-cm) typical
Basic Dynamic Load Rating of Bearings:	4300 lbs. (19120 N)
Wheel Weights: Filament	0.49 lbs (222 g),
Ribbon	0.45 lbs. (204 g),
Adapter	0.65 lbs. (295 g)

1.4 STANDARD FEATURES

- Compact size for easy mounting--even in small spaces
- Choice of 3 mounting styles: standard, flange and pillow block
- Choice of 3 standard wheel types: ribbon, filament and adapter wheel
- Load ratings from 10 to 150 lbs (45 to 670N)
- Ribbon wheel widths up to 6 inches (15.25 cm)
- Environmental Connector. Seals with mating cable electrical connector to protect against contact oxidation; especially useful in corrosive environments.

1.5 CONFIGURATION CHOICES

These are explanations of standard choices of various configurations that were specified for your application.

- **Mounting Style.** Screw or Bolt mount (S) uses a single bolt to mount to machine frame. Pillow Block bracket (PB) uses a right-angle bracket to mount onto the machine frame. Flange mount (FL) uses a four bolt flange mounted onto the machine frame which can be rotated to any position for precise orientation.
- **Load Ratings.** 10, 25, 50, 100, 150 lbs. (45, 111, 222, 445, 667 N)
- **Wheel.** Choices are as follows: **Ribbon (R1-6):** Specify width of 1 to 6 inches. **Filament (F)**, or **Adapter (A)** for custom applications. Special wheels are available as **Non-standard (N)**, or specify none and use your own wheel.
- **Connector Position.** Choices are as follows:
S, FL, PB: 1:30, 3:00, 4:30, 6:00 (std.), 7:30, 9:00, 10:30, 12 o'clock. Rear for PB only.

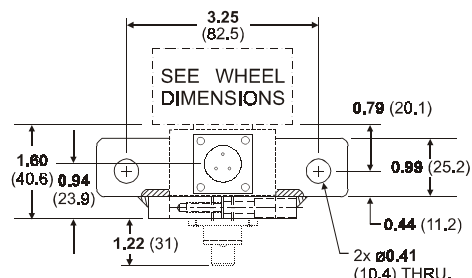
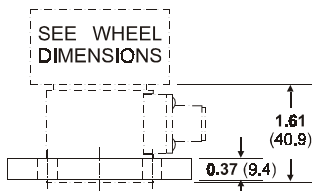
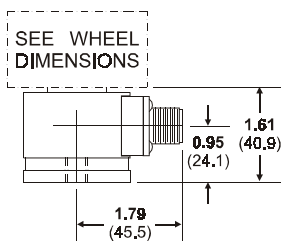
1.6 OPTIONS

- **Drill and Tap (D+T).** Drill and tap for different screw/bolt size. (S mounting style only).
- **Extended Range (XR)** . Produces twice the output signal for a given load rating. Used in applications requiring a full scale tension force that is as low as 6% of the transducer rating.- 12% is standard. Must be used with electronics having extended range also.
- **Metric Mounting Stud. (MMS)** Metric mounting screw for S type transducers.

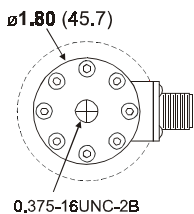
SECTION 2

INSTALLATION

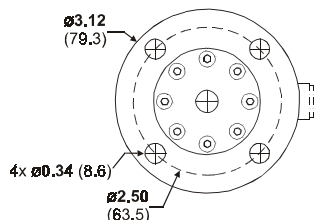
2.1 DIMENSIONS



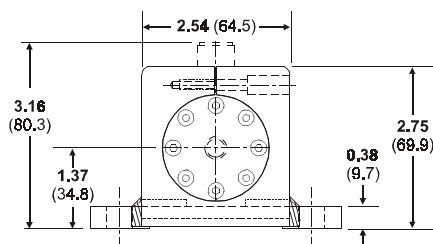
**OPTIONAL MOUNTING STYLE PB
with REAR CONNECTOR**



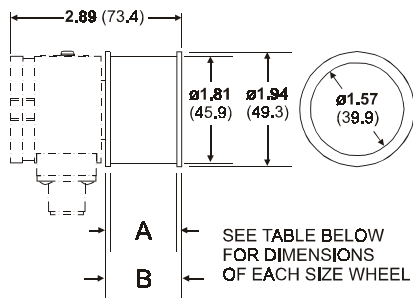
STANDARD MOUNTING STYLE S



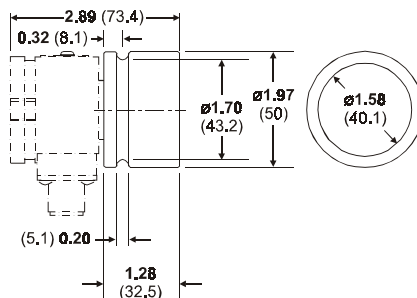
**OPTIONAL MOUNTING STYLE FL
Flange may be rotated**



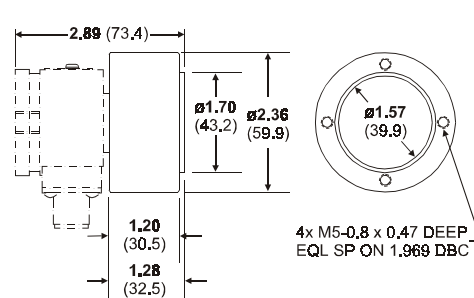
OPTIONAL MOUNTING STYLE PB



RIBBON WHEEL



FILAMENT WHEEL



ADAPTER WHEEL

		RIBBON WHEEL SIZES					
		1	2	3	4	5	6
A	in.	1.13	2.13	3.13	4.13	5.13	6.13
	mm	28.7	54.1	79.5	104.9	130.3	155.7
B	in.	1.28	2.28	3.28	4.28	5.28	6.28
	mm	32.5	57.9	83.3	108.7	134.1	159.5

Figure 2 - DIMENSIONS

2.2 PRE-INSTALLATION REQUIREMENTS

Please Note! There can be no brakes, clutches, belts, chains or gears attached to the transducer wheel. It can not be a nip roll or be in contact with a nip wheel. **Nothing must contact the wheel except the filament!**

A. TENSION ZONE. The transducer must be located in the tension zone which is to be monitored or controlled. The beginning or end of any tension zone is always at a nip (driven or braked), unwind shaft, rewind shaft or drag bar. Any element in the filament path that can change tension is at one end of a tension zone.

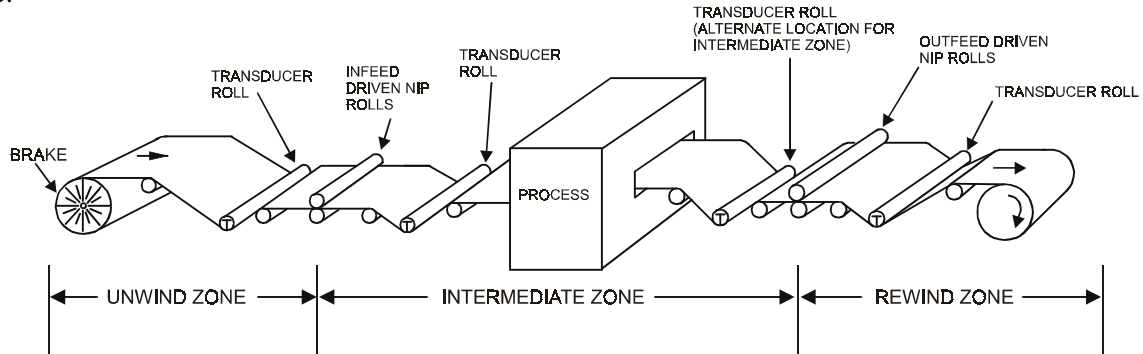


Figure 3 - TENSION ZONES

B. WRAP ANGLE

The filament must always contact the transducer wheel in exactly the same way. The wrap angle must not change as the unwind or rewind reel diameter changes. Therefore there must be at least one idler wheel between the transducer and the unwind or rewind shaft. If the machine has more than one filament path, be sure to choose a location that is wrapped the same for each. Otherwise it will be necessary to install an additional transducer, or dual calibration circuitry, or both. If the wrap angle is allowed to change, the transducer output will change with angle as well as tension, and accuracy will be reduced.

C. MOUNTING SURFACE.

The structure on which the transducers are mounted **MUST** be very stable and strong. Any movement of the structure may be sensed by the transducers and may cause inaccurate tension readings. The surfaces must also be smooth and flat so the transducers won't be crooked when they are installed.

The RFA transducer is sold in three different mounting styles and attached to the machine frame by 1 of 3 methods; single bolt (S) through the back, four bolt flange (FL), and pillow block type bracket (PB)

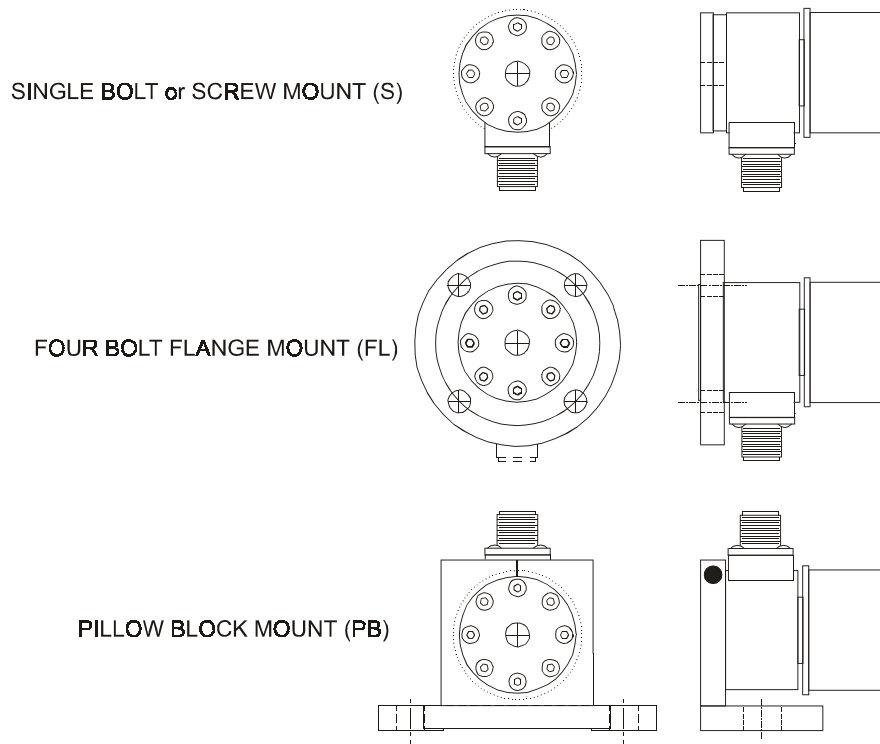


Figure 4 - RFA MOUNTING STYLES

2.3 INSTALLATION

Model RFA Tension Transducers are very easy to install. Follow the simple steps below.

1. ORIENT THE TRANSDUCER (see Figure 5)

The transducer must be turned so the Tension Force arrow (or the notch on the rear edge of the beam) points in the same direction as the Tension Force.

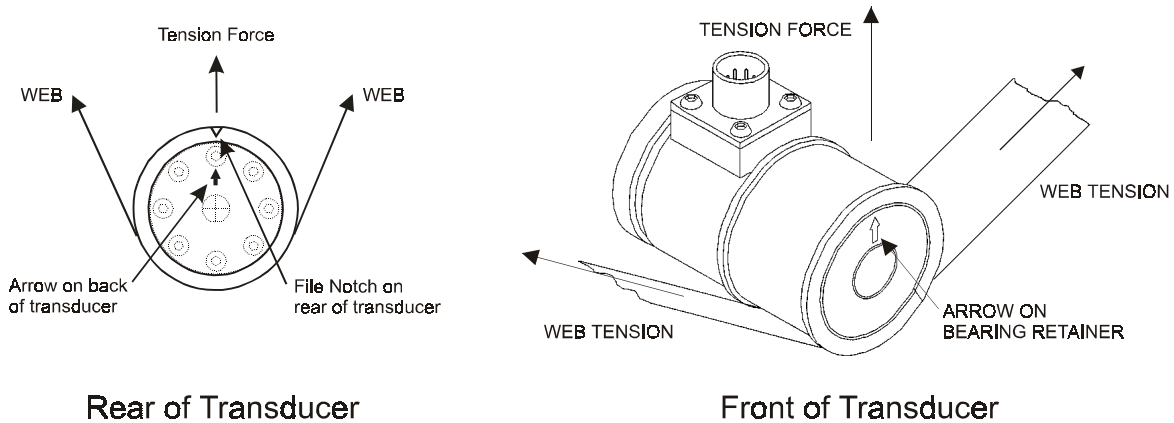


Figure 5 - TENSION FORCE DIRECTION

If you are installing an "S" or "FL," style transducer, adjust the transducer on the machine frame by hand (do NOT use a wrench) so the arrow (or notch) will bisect the wrap angle.

If you are installing a "PB" bracket style transducer, the transducer is already assembled with the force direction orientation specified when purchased. It can be aligned more accurately by loosening the clamp bolt on top of the bracket and turning the transducer by hand. (Pry the top of the bracket open with a screwdriver if necessary) Re-tighten the clamp bolt.

2. INSTALL AND TIGHTEN MOUNTING FASTENERS

With the transducer properly oriented with respect to its tension force, install mounting fasteners and tighten to secure the transducer in place.

NOTE: During installation and handling, be careful not to drop the transducer. Damage could result.

3. CONNECT TRANSDUCER TO ELECTRONICS

Make your connections to your electronics by plugging in the cables, being careful to align the connectors properly - never force them together. Tighten the connectors to properly seat the pins.

3.1 INTRODUCTION

There are no calibration adjustments on the RFA Tension Transducer itself. The instructions below are for the electronic device which the transducer is connected to. All of the following terminology and procedures assume that the transducer is connected to a **Dover Flexo Electronics** tension controller or tension indicator. If some other device is being used, you should follow the instructions furnished with it.

These are general instructions which are correct for most **Dover** controllers and indicators, and are placed here for your convenience. If you have any difficulty calibrating or if there is any discrepancy between these instructions and those in the Instruction Manual for the indicator or controller, you should disregard these instructions and follow the instructions provided in the Manual for the indicator or controller.

The transducer must be properly installed and oriented as directed in **Section 2.4.1**.

3.2 ZERO THE TENSION METER

1. Turn the "POWER" switch OFF. If the meter does not read zero, turn the mechanical adjustment screw on the meter face so the needle indicates zero tension.
2. Find an object of some kind that weighs between 25% and 100% of the maximum value on the tension meter scale. (Be sure you know the exact weight).
3. Find a lightweight line that will support the weight in step 2 above.
4. Verify that there is no line contacting the transducer wheel. Turn the "POWER" switch ON. Wait a few seconds for the tension meter to settle. Turn the "CALIBRATE" pot. to approximately 75%. Then, turn the "ZERO" pot. so the tension meter reads zero tension.

3.3 CALIBRATE THE TENSION METER

See Figure 6. Pass the line over the Transducer Wheel in exactly the same path as the filament follows. Tie the end in the machine at least one idler beyond the Transducer. Pass the other end by at least one idler before the Transducer. Be sure the line does not pass over any driven wheels, braked wheels or dead bars. (This will cause inaccurate calibration). Attach the weight to the free end of the line and let it hang without touching anything. Turn the "CALIBRATE" pot. so the tension meter reads the same as the weight. Remove the weight and line. Verify that the tension meter still reads zero. If not, re-adjust the ZERO pot. so that it does.

This concludes the calibration procedure.

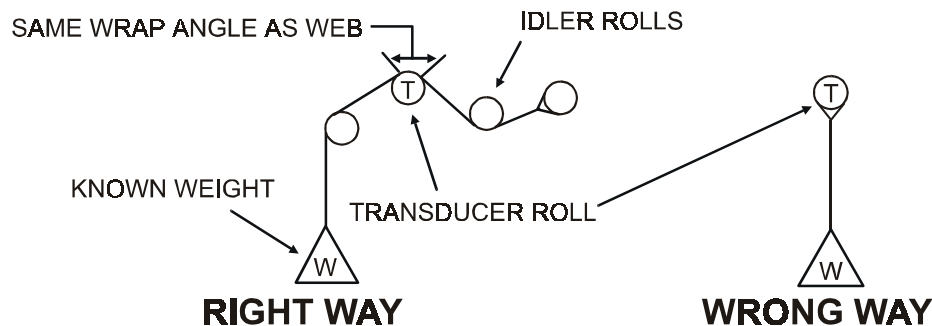


Figure 6 - WEB PATH

SECTION 4

CARE AND MAINTENANCE

Your Dover Flexo RFA Tension Transducer has been manufactured of quality materials. With proper application and installation your transducer should be relatively maintenance free and long lasting. Any changes in your application which affect the dynamics of your equipment such as web speed, net force, material, etc. could possibly require upgrading of load rating or wheel change. Contact Dover for specific information and engineering assistance.

4.1 BEARING LIFE

The bearings in the RFA Transducer will turn continuously in normal operation. They have been selected to give a long service life under typical operating conditions. Use the formula below, or the nomogram on the next page, to find the L_{10} life, in hours, for your application.

To find the radial load (P) for your application, use the appropriate sizing formula in Appendix B, substituting 2 for the 4 to eliminate the oversizing factor.

$RPM = 3.82 \times \text{line speed in feet per minute} / \text{diameter of transducer wheel in inches}$
 (RPM = 318.3 x line speed in meters per minute/diameter of transducer wheel in millimeters)

BEARING SPECIFICATIONS		
Bearing Type	Rated Load (C)	Maximum Speed (RPM)
ball	4300 lbs (19120 N)	20,000

LIFE CALCULATION FORMULAS (where P is radial load as described above)

$L_{10} = (16667 / RPM) \times (C / P)^3$, for ball bearings

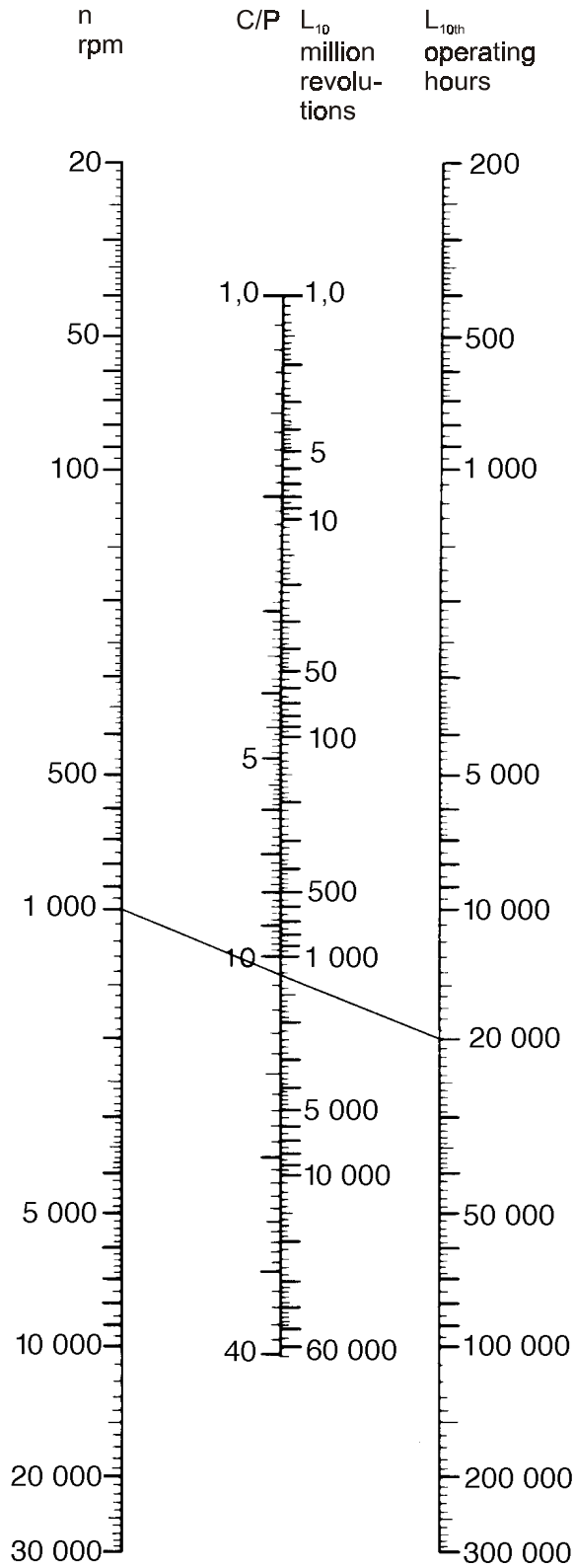
An L_{10} life of 20,000 to 30,000 hours is usually considered satisfactory for web process machinery such as printing presses, coaters, etc.

If preferred, the bearing life nomogram (Figure 7) on the next page can be used instead of the formulas. The result will be the same.

TO USE THE NOMOGRAM:

1. Use the left set of three scales for ball bearings, the right set for roller bearings.
2. Compute the speed of the bearing, in RPM.
3. Compute the ratio C/P.
4. Find the speed on the left scale. Mark it.
5. Find the value of C/P on the middle scale. Mark it on the left side of the middle scale.
6. Connect the two marks with a straight line extending to the right scale. Read the L_{10} life on the right scale where the line intersects it.

BEARING LIFE NOMOGRAM



This life is expected to be exceeded by 90% of the bearings.
The median life is approximately five times as long.

Figure 7 - BEARING LIFE NOMOGRAM

4.2 DISASSEMBLY AND REASSEMBLY - TOOLS REQUIRED

1. Right angle allen wrenches

SCREW SIZE	HEX SOCKET SIZE (inch)	LOCATION OF USE
M3 - 0.5 button	2mm	electrical connector
M4 - 0.7	3mm	beam
M8 - 1.25	6mm	bearing retainer

2. A small flat blade screwdriver.
3. 20 watt soldering iron with small tip.
4. Diagonal wire cutters.
5. Wire stripper for 30 AWG wire.

4.3 ELECTRICAL CONNECTOR REPLACEMENT

1. Remove the four screws holding the connector and spacer in place.
2. Unsolder the wires (You need not remember where the wires came from because the correct connections are listed in Appendix A (Figure 8, page 13) and in the Specifications on Page 2 of this manual. Discard the old connector.
3. Looking at the end of the new connector where the wires will be soldered, take notice of the pin letter designations.
4. Turn to either page mentioned above and solder the wires to the pins as described under connector pin assignments.
5. Carefully stuff the wires back into the housing, position the connector and spacer on the housing and reinstall and tighten the four screws.

4.4 CHANGING THE BEARING(S) AND/OR WHEEL

1. Remove the single M8 cap screw holding the wheel, bearings, retainer, and spacer (if any) onto the beam.
2. Remove the wheel, bearings, and bearing retainer from the beam. If the hardware does not separate easily, it may be carefully pried apart by putting flat blade screwdrivers between the wheel and housing and prying equally on opposite sides of the assembly so as not to distort the beam.
3. Remove the bearing retainer, retaining ring and bearings from the wheel.
4. Reassemble the unit with new bearings, new wheel, or both by following the preceding steps in reverse order.

This is a list of problems which could occur during initial start-up or afterwards. The probable causes are listed with the most likely one first and the least likely one last.

1. TRANSDUCER WHEEL SHAKES, VIBRATES, or BOUNCES

- a. Wheel is not balanced.
- b. Transducer is not securely mounted.
- c. Wheel is turning at its natural frequency. Call **DOVER** for analysis of operating conditions and solution to problem.
- d. Transducer beam is vibrating sympathetically with a vibrating machine frame.

2. CANNOT ADJUST TENSION METER TO READ ZERO WHEN FILAMENT IS SLACK

- a. Failure in the tension indicator circuit. Refer to tension indicator manual.
- b. Strain gage failure. Perform test in 4c below.
- c. Wheel greater than 95% load rating ($W \cos(A)$).

3. TENSION METER READS BACKWARDS

- a. Transducer is installed backwards with force arrow pointing in opposite direction. See Section 2.3.1 page 5.
- b. Transducer cable is connected wrong at controller/indicator terminal strip. Signal wires are reversed.

4. TENSION METER NEEDLE PEGS HIGH OR LOW

- a. Meter is not electrically adjusted to zero. See Section 3.2 page 6.
- b. Transducer cable has broken wire, poor connection or short circuit.
- c. A strain gage has failed. To verify: Unplug the transducer cable and use an ohm-meter to measure the resistance of the gages at the connector on the transducer. Measure between pins A,B, and A,C. Also measure between pins D,E and D,F. In each case the resistance should be about 100 ohms. Measure the resistance between any pin and the housing of the transducer. The meter should read infinite resistance. Apply an appropriate force to the wheel by hand or by using a line and a weight, in the direction of the tension force and maintain it while again measuring between pins A,B and A,C. Repeat while measuring between pins D,E and D,F. The resistance should be only a few ohms different from before.
- d. Failure in the tension amplifier circuit of the controller/indicator.

5. TENSION METER DOES NOT READ ZERO WHEN FILAMENT IS SLACK AND READING DRIFTS WITH TIME.

- a. Meter is not calibrated. See Section 3.3 page 6.
- b. Transducer cable has a broken wire, poor connection, ground or short circuit.
- c. A strain gage is cracked. Perform the test in 4c. above.

6. TENSION METER DOES NOT READ THE SAME EACH TIME THE SAME FORCE IS APPLIED (poor repeatability)

- a. Extreme build-up of dirt, ink, adhesive, grease or other foreign material inside end of transducer causing interference with beam movement.
- b. Transducer cable has a broken wire, poor connection, ground or short circuit.
- c. Strain gage failure. See 4c. above for test.

**7. TENSION METER READING DOES NOT CHANGE WHEN FORCE IS APPLIED TO WHEEL.
METER READS ZERO.**

- a. Meter is not calibrated. See Section 3.3 page 6.
- b. Extreme build-up of dirt, ink, adhesive, grease or other foreign material inside end of transducer causing interference with beam movement.
- c. Transducer cable has broken wire, poor connection, ground or short circuit.
- d. Transducer cables connected incorrectly, or to wrong transducers.
- e. Failure of tension amplifier circuit in controller/indicator. Unit not turned on.

8. TENSION METER NEEDLE BOUNCES

- a. Filament tension is fluctuating because of machine speed fluctuations, worn bearings, chattering unwind brake, flat spot in unwind or rewind roll, machine vibration, etc.
- b. Transducer is not securely mounted.
- c. Tension controller is not adjusted properly. See controller Instruction Manual for procedure.
- e. Failure in the tension amplifier circuit of the controller/indicator.

SECTION 6

REPLACEMENT PARTS

(DFE P/N)

PART DESCRIPTION	COMMERCIAL DESIGNATION	DFE PART NUMBER
Electrical Connector	ITT Cannon KPT02F10-6P	106-0049
Mating Electrical Connector	ITT Cannon KPT06F10-6S	106-0050
Connector Screws	M3 x 0.5 x 16mm Button Head Socket Cap	123-0093
Beam Screws	M4 X 0.7 X 12mm Socket Head Cap	123-0232
Flat Seal	NONE	503-0001
Bearings	SKF 6203ZZ	133-0028
Bearing Retaining Rings	Smalley VH-156	135-0022
Beam Retaining Screws	M8-1.25 x 35mm Socket Head Cap	123-0301
Instruction Manual	NONE	DOC 801-0784 R2

Call **Customer Service** for prices and for part numbers of items not listed. For help with service or repairs, call **Technical Service**.

DOVER FLEXP ELECTRONICS

Telephone: 603-332-6150

Fax: 603-332-3758

E-Mails: customerservice@dfc.com, techsupport@dfc.com

Internet: www.dfc.com

RIBBON FILAMENT (RFA) TRANSDUCERS

THE TENSION (T) AND COMPRESSION (C) STRAIN GAGES ARE CONNECTED IN A BRIDGE CONFIGURATION. AS THE BEAMS BEND SLIGHTLY UNDER WEB TENSION, THE GAGE RESISTANCES CHANGE PRODUCING AN OUTPUT SIGNAL WHICH IS DIRECTLY PROPORTIONAL TO THE WEB TENSION.

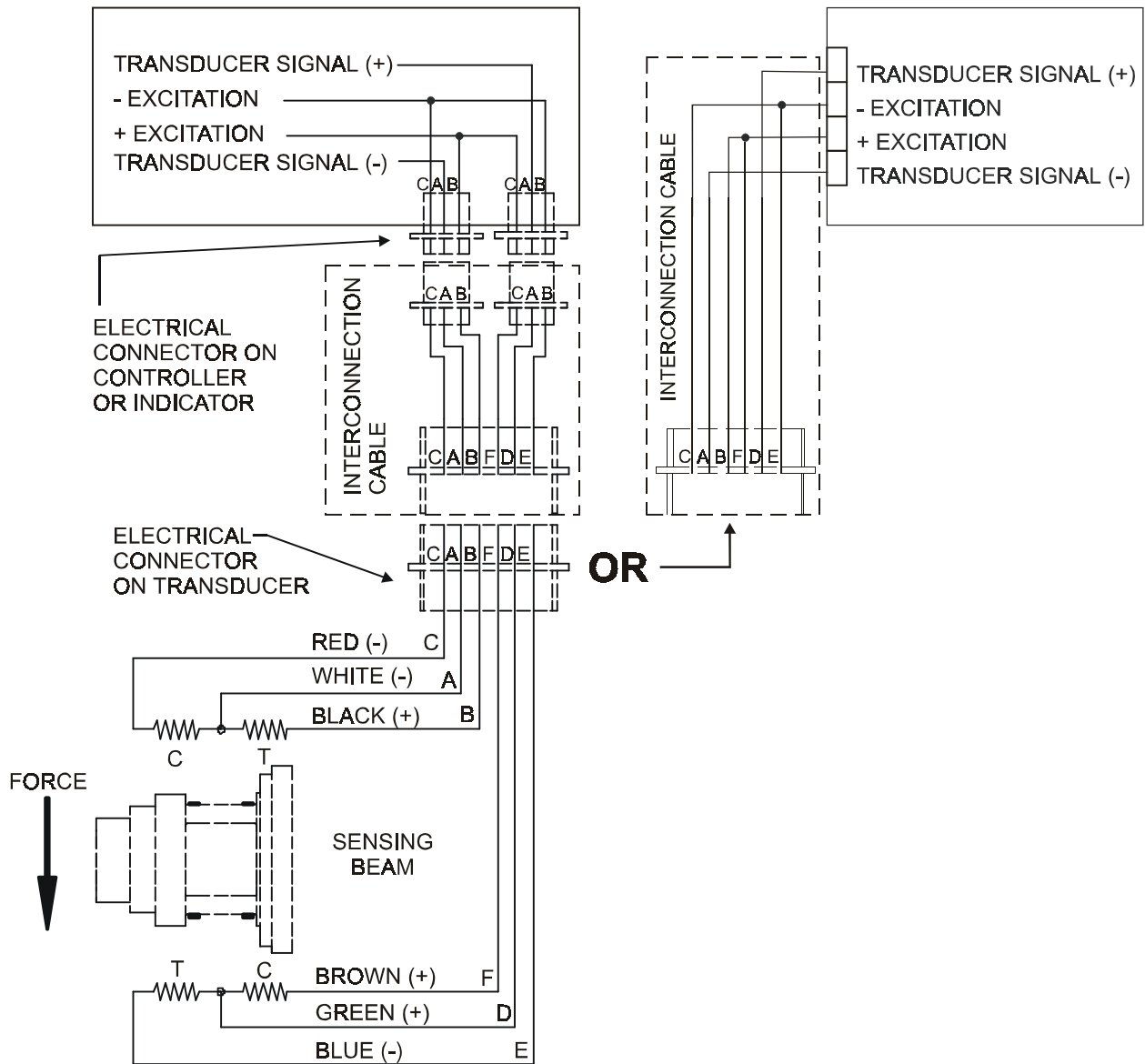


Figure 8 - MODEL RFA TRANSDUCER WIRING

Appendix B:

Selection of Load Rating

Following is the procedure used to calculate the load rating for the transducer(s) for your application. The correct transducer load rating was determined by maximum ribbon (or filament) tension, wrap angle, and wheel weight. If you change any part of your application or plan to move your transducers to another application, please follow the steps below to reconfigure. As always please feel free to contact one of our Applications Engineers for assistance .

The RFA Tension Transducer is available with five standard load ratings ranging from 10 pounds to 150 pounds (45N to 665N). Choose the appropriate wrap configuration from the following diagrams. Then compute the Net Force using the formula below the diagram.

SELECTION PROCEDURE:

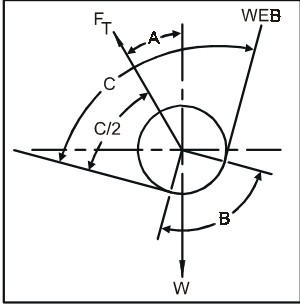
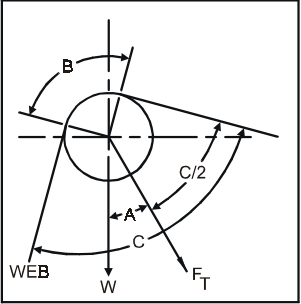
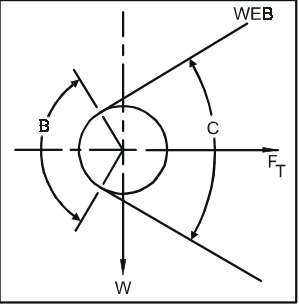
The correct load rating is found in four simple steps:

Step 1: OBTAIN DATA TO PLUG INTO THE SELECTION FORMULA

- Estimate the maximum web (or filament) tension. Use the Typical Tensions table in Appendix B as a guide if necessary.
- Determine the wrap angle and tension force direction.

Step 2: COMPUTE NET FORCE USING THE SELECTION FORMULA

Refer to the formulas above. Compute the Net Force, using the formula below the correct wrap diagram.

WRAP 1	WRAP 2	WRAP 3	TABLE 1
Tension Force F_T above horizontal	Tension Force F_T below horizontal	Tension Force F_T is horizontal	Angle (Degrees)
			SINE COSINE
$NET \text{ FORCE} = 4T \sin\left(\frac{B}{2}\right) - W \cos(A)$	$NET \text{ FORCE} = 4T \sin\left(\frac{B}{2}\right) + W \cos(A)$	$NET \text{ FORCE} = 4T \sin\left(\frac{B}{2}\right)$	0 1.000
W = Wheel weight (See Note below) B = Wrap angle = $180^\circ - C^\circ$	T = Maximum web tension A = Angle between Tension Force F_T and vertical		5 .996
			10 .985
			15 .966
			20 .940
			25 .906
			30 .866
			35 .819
			40 .766
			45 .707
			50 .643
			55 .574
			60 .500
			65 .423
			70 .342
			75 .259
			80 .174
			85 .087
			90 1.000 .000

NOTE: Weight of standard filament wheel is 0.49 lbs. (222 grams) including bearings and fasteners
 Weight of standard ribbon wheel is 0.45 lbs. (204 grams) including bearings and fasteners
 Weight of standard adapter wheel is 0.65 lbs. (295 grams) including bearings and fasteners.
 Weight of customer supplied wheel must be provided and is subject to DFE engineering approval.

Step 3: SELECT THE LOAD RATING

Use the table below to select the correct load rating. In some cases, the load rating may be **LESS** than the computed Net Force. This is acceptable because the Net Force formula contains an oversizing factor of 2. Therefore the actual force exerted on the transducer will not exceed its rating, if the transducer is chosen according to the following chart.

LOAD RATING CHART	
NET FORCE - lbs. (N)	LOAD RATING - lbs. (N)
up to 13 (up to 58)	10 (45)
14 - 32 (59 - 142)	25 (111)
33 - 63 (143 - 280)	50 (222)
63 - 125 (281 - 556)	100 (445)
126 - 187 (557 - 832)	150 (667)

Step 4: COMPARE LOAD RATING WITH EFFECTIVE TRANSDUCER WHEEL WEIGHT

The following applies only to non-standard wheels or other hardware used in place of the wheel:

Sometimes a wheel is so heavy that its weight uses up most of the operating range of the transducer. When this happens, it may not be possible to adjust the tension indicating meter to read zero when tension is zero because the adjustment range of the electronic circuit has been exceeded. To find out if the wheel is too heavy, compare the load rating with the effective weight of the wheel as follows: The effective wheel weight is the " $W \cos(A)$ " term in the formula. If $W \cos(A)$ is more than 95% of the load rating chosen, the tension meter will probably not be adjustable to zero. If this is the case, one or more of the following changes must be made to reduce $W \cos(A)$ to less than 95% of the load rating:

1. Reduce the transducer wheel weight,
2. Increase angle (A),
3. Use the next higher load rating (this is the least desirable choice because it reduces transducer signal output).

Appendix C:

Typical Tensions for Various Materials

TYPICAL TENSIONS FOR WEB MATERIALS

ACETATE		0.5 lb. per mil per inch of width	
FOIL	Aluminum	0.5 lb. per mil per inch of width	
	Copper	0.5 lb. "	
CELLOPHANE		0.75 lb. per mil per inch of width	
NYLON		0.25 lb. per mil per inch of width	
PAPER	15 lb *	0.4 lb. per inch of width	
	20 lb	0.5 lb. "	
	30 lb	0.75 lb. "	
	40 lb	1.25 lb. "	
	60 lb	2.0 lb. "	
	80 lb	3.0 lb. "	
	100 lb	4.0 lb. "	
* based on 3000 sq. ft. ream			
PAPERBOARD	8pt	3.0 lb. per inch of width	
	12pt	4.0 lb. "	
	15pt	4.5 lb. "	
	20pt	5.5 lb. "	
	25pt	6.5 lb. "	
	30pt	8.0 lb. "	
POLYETHYLENE		0.12 lb. per mil per inch of width	
POLYESTER (Mylar)		0.75 lb. per mil per inch of width	
POLYPROPYLENE		0.25 lb. per mil per inch of width	
POLYSTYRENE		1.0 lb. per mil per inch of width	
RUBBER	<u>GAUGE</u>	<u>AT 25% STRETCH</u>	<u>AT 50% STRETCH</u>
	10 mil	1.75	3.68
	12 mil	1.10	2.03
	16.5 mil	4.09	8.17
	26 mil	2.47	4.97
SARAN		0.15 lb per mil per inch of width	
STEEL	<u>GAUGE - INS</u>	<u>UNWIND-PSI</u>	<u>REWIND-PSI</u>
	.001 -.005	1000	4000
	.006 -.025	850	3500
	.026 -.040	750	3000
	.041 -.055	650	2600
	.058 -.070	550	2200
	.071 -.090	450	1800
	.091 -.120	450	1400
	.121 -.140	400	1200
	.141 -.165	400	1000
	.166 -.200	400	900
	.201 -.275	400	800
	.276 -.380	300	700
VINYL		0.05 lb. per mil per inch of width	

*** For laminated webs, sum the tension for the individual webs and add 0.1 lb per inch of width.

TERMS AND CONDITIONS OF SALE AND SHIPMENT

1. THE COMPANY

Dover Flexo Electronics, Inc. is hereinafter referred to as the Company.

2. CONFLICTING OR MODIFYING TERMS

No modification of, additions to or conflicting provisions to these terms and conditions of sale and shipment, whether oral or written, incorporated into Buyer's order or other communications are binding upon the Company unless specifically agreed to by the Company in writing and signed by an officer of the Company. Failure of the Company to object to such additions, conflicts or modifications shall not be construed as a waiver of these terms and conditions nor an acceptance of any such provisions.

3. GOVERNING LAW

This contract shall be governed by and construed according to the laws of the state of New Hampshire, U.S.A. The parties agree that any and all legal proceedings pursuant to this contract shall take place under the jurisdiction of the courts of the State of New Hampshire in the judicial district of Strafford County.

4. PENALTY CLAUSES

Penalty clauses of any kind contained in orders, agreements or any other type of communication are not binding on the Company unless agreed to by an officer of the Company in writing.

5. WARRANTY

Dover Flexo Electronics, Inc. warrants, to the original Buyer, its' products to be free of defects in material and workmanship for five years from date of original shipment. Repairs on products are warranted for 90 days from date of shipment. During the warranty period the Company will repair or replace defective products free of charge if such products are returned with all shipping charges prepaid and if, upon examination, the product is shown to be defective. This warranty shall not apply to products damaged by abuse, neglect, accident, modification, alteration or mis-use. Normal wear is not warranted. All repairs and replacements under the provisions of this warranty shall be made at Dover Flexo Electronics or at an authorized repair facility. The Company shall not be liable for expenses incurred to repair or replace defective products at any other location or by unauthorized persons or agents. This warranty contains all of the obligations and warranties of the Company. There are no other warranties, either expressed or implied. No warranty is given regarding merchantability or suitability for any particular purpose. The Company shall not be liable in either equity or law for consequential damages, losses or expenses incurred by use of or inability to use its' products or for claims arising from same. No warranty is given for products of other manufacturers even though the Company may provide these products with its' own or by themselves. The provisions of this warranty can not be changed in any way by any agent or employee of the Company. Notice of defects must be received within the warranty period or the warranty is void. The warranty is void if the serial number tag is missing or not readable.

6. PAYMENTS

Standard terms of credit are net 30 days from date of shipment, providing satisfactory credit is established with the Company. Amounts past due are subject to a service charge of 1.5% per month or portion thereof or 18% per annum. The Company reserves the right to submit any unpaid late invoices to a third party for collection and Buyer shall pay all reasonable costs of such collection in addition to the invoice amount. All quoted prices and payments shall be in U.S. Dollars.

If the Company judges that the financial condition or payment practices of the Buyer does not justify shipment under the standard terms or the terms originally specified, the Company may require full or partial payment in advance or upon delivery. The Company reserves the right to make collection on any terms approved in writing by the Company's Finance Department. Each shipment shall be considered a separate and independent transaction and payment therefore shall be made accordingly. If the work covered by the purchase order is delayed by the Buyer, upon demand by Company

payments shall be made on the purchase price based upon percentage of completion.

7. TAXES

Any tax, duty, custom, fee or any other charge of any nature whatsoever imposed by any governmental authority on or measured by any transaction between the Company and the Buyer shall be paid by the Buyer in addition to the prices quoted or invoiced.

8. RETURNS

Written authorization must be obtained from the Company's factory before returning any material for which the original Buyer expects credit, exchange, or repairs under the Warranty. Returned material (except exchanges or repairs under the Warranty) shall be subject to a minimum re-stocking charge of 15%. Non-standard material or other material provided specially to the Buyer's specification shall not be returnable for any reason. All material returned, for whatever reason, shall be sent with all freight charges prepaid by the Buyer.

9. SHIPPING METHOD AND CHARGES

All prices quoted are EXW the Company's factory. The Company shall select the freight carrier, method and routing. Shipping charges are prepaid and added to the invoice of Buyers with approved credit, however the Company reserves the right to ship freight-collect if it prefers. Shipping charges will include a charge for packaging. Company will pay standard ground freight charges for items being returned to Buyer which are repaired or replaced under the Warranty.

10. CANCELLATION, CHANGES, RESCHEDULING

Buyer shall reimburse Company for costs incurred for any item on order with the Company which is cancelled by the Buyer. Costs shall be determined by common and accepted accounting practices.

A one-time hold on any item ordered from the Company shall be allowed for a maximum of 30 days. After 30 days, or upon notice of a second hold, Company shall have the right to cancel the order and issue the appropriate cancellation charges which shall be paid by Buyer. Items held for the Buyer shall be at the risk and expense of the Buyer unless otherwise agreed upon in writing. Company reserves the right to dispose of cancelled material as it sees fit without any obligation to Buyer.

If Buyer makes, or causes to make, any change to an order the Company reserves the right to change the price accordingly.

11. PRICES

Prices published in price lists, catalogs or elsewhere are subject to change without notice and without obligation. Written quoted prices are valid for thirty days only.

12. EXPORT SHIPMENTS

Payment for shipments to countries other than the U.S.A. and Canada or to authorized distributors shall be secured by cash in advance or an irrevocable credit instrument approved by an officer of the Company. An additional charge will apply to any letter of credit. There will also be an extra charge for packaging and documentation.

13. CONDITION OF EQUIPMENT

Buyer shall keep products in good repair and shall be responsible for same until the full purchase price has been paid.

14. OWNERSHIP

Products sold are to remain the property of the Company until full payment of the purchase price is made.

DECLARATION OF CONFORMITY

We,

Dover Flexo Electronics
217 Pickering Road
Rochester, NH 03867 USA
Tel: (603) 332-6150
Fax: (603) 332-3758

declare under our sole responsibility that the product:

Model RF0/1 Web Tension Transducer,

manufactured after the date 1 May 1997, and to which this declaration relates, is in conformity with the following standards or other normative documents:

EN 55011: Radiated and Conducted Emissions
EN 50082-2: Electromagnetic compatibility - Generic immunity standard,
Part 2. Industrial Environment, to include:
ENV 50140: Radio Frequency Immunity - AM
ENV 50141: Conducted Radio Frequency Interference
ENV 50204: Radio Frequency Immunity - Pulse Modulated
ENV 61000-4-2: Electrostatic Discharge
EN 61000-4-4: Electrical Fast Transient Bursts

following the provisions of Council Directive 89/336/EEC of 3 May 1989 on the approximation of the laws of the member states relating to electromagnetic compatibility (the "EMC Directive").

The Technical Construction File is maintained at:

Dover Flexo Electronics
217 Pickering Road
Rochester, NH 03867 USA

Per Annex II R of the Machinery Directive (89/392/EEC):

The machinery, product, assembly, or sub-assembly covered by this Declaration of Conformity must not be put into service until the machinery into which it is to be incorporated has been declared in conformity with the provisions of the applicable Directive(s).

Date of issue: 5 May, 1997

Place of issue: Rochester, NH USA

Signed: Alan H. Wysocki

Alan H. Wysocki, Engineering Manager

INDEX

Beam	1, 10	Net Force	14
Bearing	1, 9	Nomogram of bearing life	8
life calculation	7-8	Options	2
part number	12	Output	2
specifications	7	Overload	2
Breakaway torque	2	Parts, replacement	12
Calibration	6	PB (see Mounting style)	
Care and Maintenance	7	PB bracket	2, 3, 4
Configuration Choices	2	Pre-installation Requirements	4
Construction	1	Removal of transducer	9
Cut-away View	1	Repeatability	2
Declarations of Conformity	18	Replacement Parts	12
Deflection	1, 2	S (see Mounting style)	
Dimensions	3	Seals	1, 12
Electrical connections	2, 5, 9, 13	Specifications	2
Electrical connector	1, 2	Standard Features	2
changing	9	Stop (see Overload stop)	
environmental	2	Strain gage	1, 2, 13
mating connector part number	2, 12	Temperature	
positions available	2	coefficient	2
Excitation voltage	2	range	2
Extended Range	2	Tension force	5, 14
F_T (see Tension force)		Tensions, typical	16
FL (see Mounting style)		Tension zones	4
Gage (see Strain gage)		Terms and Conditions of Sale	17
Hysteresis	2	Troubleshooting	10-11
Installation	3-5	Warranty	17
Linearity	2	Web path	6
Load rating	2	Wheatstone bridge	13
selection of	14	Wheels	2, 9
Material	2	Dimensions	3
Mechanical Operation	1	Weights	2
Metric Mounting Stud	2	Wrap angle	4, 14
Mounting	4, 5	Zero	6
styles	2, 3, 4		



217 PICKERING ROAD
ROCHESTER, NEW HAMPSHIRE 03867-4630 U.S.A
TEL: 603-332-6150
FAX: 603-332-3758
E-MAIL: info@dfc.com Internet: www.dfc.com

CANADA

MEXICO

UNITED KINGDOM

EUROPE

TAIWAN

KOREA

AUSTRALIA

COLOMBIA

CHILE